



Rachel Heller

FLOWERS

Rachel Heller

8 - 13 February, 2016

21 Cork Street  
London W1S 3LZ

FLOWERS

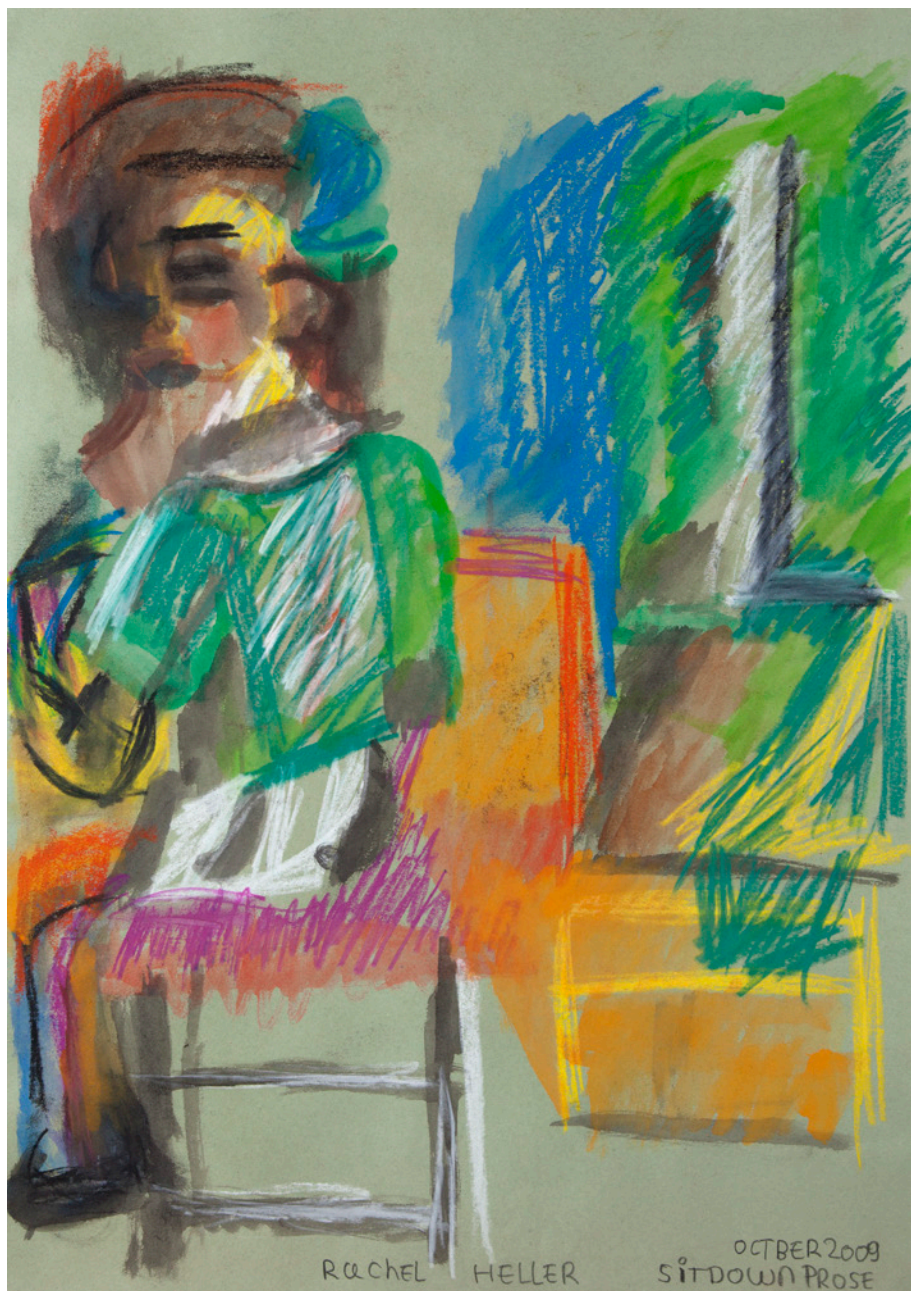


*Rachel Heller, 2015*  
Rachel Ulph Photography

Over the last century artists have often used concepts to present their work. We are so accustomed to the information accompanying exhibitions that when none is forthcoming, it is interpreted as a statement. For this reason Rachel Heller's work can seem mysterious, maybe even silent. This is because our eyes have been trained to see first through words. Spend time with Rachel's work and one learns a visceral language, full of colour and emotion, mood and sexuality. She suggests form in such a fascinating way, via stylised lines and shapes that are effortless and immediate yet also recognise the constructed and delicate nature of perception. As such, it is full of the work of other artists and yet always completely her own.

**Matthew Cheeseman**





*Sit Down Prose*, 2009  
Pastel on paper  
59.5 x 42 cm  
23 3/8 x 16 1/2 in

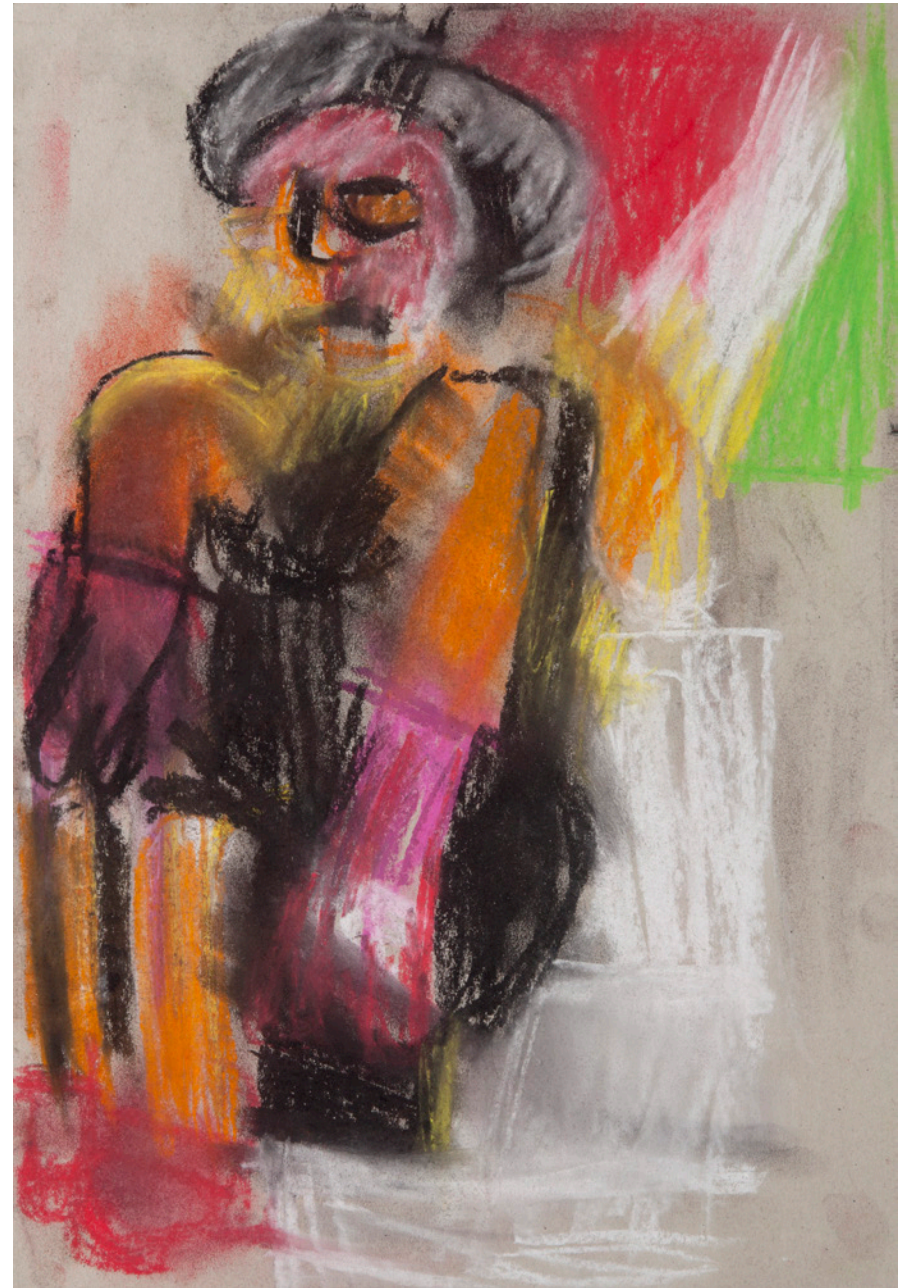


*Flowers Still Life*, 2016  
Pastel on paper  
30 x 21.5 cm  
11 3/4 x 8 1/2 in





*Still Life*, 2007  
Pastel on paper  
42 x 30 cm  
16 1/2 x 11 3/4 in



*Sit Down Prose*, 2016  
Pastel on paper  
42 x 30 cm  
16 1/2 x 11 3/4 in





*Blue Flowers*, 2016  
Pastel on paper  
42 x 30 cm  
16 1/2 x 11 3/4 in



*Nude Woman*, 2016  
Pastel on paper  
50 x 35 cm  
19 3/4 x 13 3/4 in





*Wittenham Clumps*, 2016  
 Pastel on paper  
 40 x 58 cm  
 15 3/4 x 22 7/8 in



*Road*, 2016  
 Pastel on paper  
 44 x 42 cm  
 17 3/8 x 16 1/2 in





*Sit Down Prose*, 2016  
 Pastel on paper  
 43.5 x 59.5 cm  
 17 1/8 x 23 3/8 in



*Blue Sky*, 2016  
 Pastel on paper  
 42 x 59 cm  
 16 1/2 x 23 1/4 in





*Flowers, 2016*  
 Pastel on paper  
 43 x 27 cm  
 16 7/8 x 10 5/8 in



*Woman Sleeping, 2001*  
 Oil and mixed media on canvas  
 153 x 183.5 cm  
 60 1/4 x 72 1/4 in





*Untitled (nude woman lying down), 2003*  
pencil, chalk and pastel on paper  
30 x 45 cm  
12 x 17 3/4 in



*Sleeping Woman, 2006*  
Pastel and charcoal on paper  
43 x 59.5 cm  
17 x 23 1/2 in





*Marde Carden, 2006*  
Oil on canvas  
153 x 183 cm  
60 1/4 x 72 in



*Stand Prose, 2011*  
Pastel chalk on paper  
59.5 x 42 cm  
23 1/2 x 16 3/4 in





*Sit Down Prose*, 2011  
 Pastel on paper  
 51 x 40.5 cm  
 20 1/4 x 16 in



*Sit Down Prose*, 2011  
 Pastel and pencil on paper  
 59 x 42 cm  
 23 1/4 x 16 3/4 in





*Sit Down Prose*, 2012  
pencil, chalk and pastel on paper  
60 x 41 cm  
23 3/4 x 16 1/4 in



*Sit Down Prose*, 2012  
Pastel and pencil on paper  
49 x 37 cm  
19 1/2 x 14 3/4 in





*Sit Down Prose*, 2012  
pencil, chalk and pastel on paper  
60 x 41 cm  
23 3/4 x 16 1/4 in



*Sit Down Prose*, 2012  
pencil, chalk and pastel on paper  
60 x 41 cm  
23 3/4 x 16 1/4 in





*Bob Reading*, 2016  
Mixed media  
15 x 10 x 2 cm  
5 7/8 x 4 x 3/4 in



*Swimming*, 2016  
Mixed media  
19 x 14 x 7 cm  
7 1/2 x 5 1/2 x 2 3/4 in





*Dancing*, 2016  
Mixed media  
20 x 14 x 12 cm  
7 7/8 x 5 1/2 x 4 3/4 in

## Rachel Heller

1973	Born London
1977-84	The Gatehouse Learning Centre
1984-86	Holly Court School
1987-91	Queen Elizabeth II Jubilee School
1991-93	Kingsway College
1993-94	Leighton Project – Elfrida Rathbone
1994-99	Hammersmith and West London College
1994-98	Life Class Byam Shaw School of Art
1999-2000	Byam Shaw School of Art (Foundation)
2000	Slade Summer School (Figurative Painting)
2000-1	Byam Shaw School of Art (Diploma)
2001	Slade Summer School (Figurative Painting)
2001	Princes Foundation (June-July)
2003	Slade Summer School (Figurative Painting)
2005-2007	The Prince's Drawing School, London

## Exhibitions

2016	<i>Rachel Heller</i> , Flowers Gallery, Cork Street, London
2015	<i>Heart &amp; Sold</i> , The Senator Group, New York
	<i>Heart &amp; Sold</i> , The Senator Group, London
	Royal Academy Summer Exhibition, London
2014	<i>Wash</i> , Resort Gallery, Margate
	<i>Royal Academy Summer Exhibition</i> , London
2013	<i>Small is Beautiful XXXI</i> , Flowers Gallery, Kingsland Road, London
	<i>Rachel Heller</i> , Flowers Gallery, New York
2012	<i>100 Prints</i> , London, Flowers Gallery, Kingsland Road, London
	<i>Royal Academy Summer Exhibition</i> , Royal Academy of Arts, London
	<i>Angela Flowers at 80</i> , Flowers Gallery, Kingsland Road, London
	<i>Small is Beautiful XXX</i> , Flowers Gallery, Cork Street, London
2011	<i>Recent Work</i> , Flowers East, London
	<i>I know a place</i> , Flowers East, London
	<i>Small is Beautiful XXIX</i>
2010	<i>Small is Beautiful XXVIII</i> , Flowers Central, London
	<i>40 Years On</i> , Flowers East, London
2009	<i>One Person Exhibition</i> , Flora & Fauna, Flowers Cork Street, London
	<i>Small is Beautiful XVII</i> , Nursery Rhymes, Flowers East, London
2008	<i>Small is Beautiful XVI</i> , Love, Flowers East, London
2007	<i>One Person Exhibition</i> , Doswell Gallery, Rosscarbery, Co Cork
	<i>Small is Beautiful XXV</i> , Flowers Central, London
2006	<i>One Person Exhibition</i> , New Work, Flowers East, London



- 2005 *Royal Academy Summer Exhibition*, Royal Academy of Arts, London  
*Discerning Eye Exhibition*, Mall Galleries, London  
*Small is Beautiful, Part 23*, Flowers Central, London  
*Royal Academy Summer Exhibition*, Royal Academy of Arts, London
- 2004 *Royal Academy Summer Exhibition*, Royal Academy of Arts, London  
*Contemporary Nudes*, Flowers East, London  
*Small is Beautiful, Part 22: Here and Now*, Flowers Central, London  
*Hunting Art Prize*, London
- 2004 *One Person Exhibition*, Angela Flowers (Ireland) Inc.  
*One Person Exhibition*, New Work, Flowers Central, London  
*Small is Beautiful, Part 21: War and Peace*, Flowers Central, London
- 2003 *Small is Beautiful, Part 20: Voyage*, Flowers East, London  
2002 *One Person Exhibition*, Gallery M, London  
*Royal Academy Summer Exhibition*, Royal Academy of Arts, London  
*Small is Beautiful, Part 19: Still Life*, Flowers East, London
- 2001 *One Person Exhibition*, Gallery M, London  
*Small is Beautiful, Part 18: Self Portrait*, Flowers East, London
- 2000 *One Person Exhibition*, Gallery M, London  
*Small is Beautiful, Part 17: Millennium*, Flowers East, London
- 1999 *Absolut Secret*, Royal College of Art, London  
1998 *One Person Exhibition*, Gallery M, London  
*Small is Beautiful, Part 16: Music*, Flowers East, London
- 1997 *Small is Beautiful, Part 14: Sex*, Flowers East at London Fields, London  
*One Person Exhibition*, Gallery M, London  
*Small is Beautiful, Part 15: Death*, Flowers East at London Fields, London
- 1996 Angela Flowers (Ireland) Inc, Co Cork  
1995 *One Person Exhibition*, John Jones Art Centre, London  
*Small is Beautiful, Part 13: Food and Drink*, Flowers East, London

#### Awards

- 2006 Hugh Casson Drawing Prize, Royal Academy Summer Exhibition

#### Collections

IMMA  
 Albers Foundation  
 Private Collections

*Rachel Heller*, 2015  
 Rachel Ulph Photography





Published on the occasion of:

# Rachel Heller

8 - 13 February, 2016

21 Cork Street  
London, W1S 3LZ  
+44 (0)20 7439 7766

82 Kingsland Road  
London E2 8DP  
+44 (0)20 7920 7777

529 West 20th Street  
New York, NY 10011  
+(1) 212 439 1700

[info@flowersgallery.com](mailto:info@flowersgallery.com)  
[www.flowersgallery.com](http://www.flowersgallery.com)

© 2016 Flowers Gallery, London and New York

ISBN 978-1-906412-74-6  
Edition of 200

Design: Alex Peake  
Photography: Antonio Parente  
Co-ordination: Jessica Rutterford

Printing: Empress, London

# FLOWERS